

**/// ULTRAFLEX**



*Steering Wheels*



VERO VOLANTE ITALIANO

“VERO VOLANTE ITALIANO”

is the registered trademark which distinguishes the steering wheels for pleasure boats produced by Ultraflex.

They are conceived by Italian designers, engineered and manufactured in Italy by employing genuine Italian components and technologies according to Ultraflex quality management system.

All ULTRAFLEX steering wheels meet the directive 2013/53/EU requirements about pleasure boats.

All steering wheels are CE, UKCA and NMMA marked in conformity with the ISO 23411 and ABYC P22 safety standards.



# BOCCANEGRA



VERO VOLANTE ITALIANO



  
CHRISTIANGRANDE  
DesignWorks

Boccanegra L B/L



350 mm (13.8")  $\emptyset$



89 mm (3.5") Depth



**Boccanegra L B/L 67460P**  
Black leather grip, stainless steel spokes,  
black leather cover



**Boccanegra L W/L 67295B**  
White leather grip, stainless steel spokes,  
white leather cover



**Boccanegra L SB/P 67296D**  
Sky-blue leather grip, stainless steel spokes,  
sky-blue painted cover



**Boccanegra L B/CH 20944Z**  
Black leather grip stainless steel spokes,  
chrome plated cover

<b>Grip material</b>	Leather
<b>Grip color</b>	Black, white, sky-blue
<b>Spokes</b>	Polished 316L stainless steel
<b>Center cap</b>	Leather or painted
<b>Floating cap</b>	n.a.
<b>Standard 3/4" hub</b>	Included
<b>QDH hub</b>	n.a.
<b>Certifications &amp; standards</b>	CE, UKCA, NMMA; ISO 23411 & ABYC P22

# ODERICO



VERO VOLANTE ITALIANO



Oderico L B/SS/CH



350 mm (13.8")  $\emptyset$



75 mm (2.95") Depth



**Oderico L B/SS/CH 69570H**  
 Black leather grip, stainless steel spokes,  
 black painted cover



**Oderico V B/SS/CH 69563L**  
 Black vinyl grip, stainless steel spokes,  
 black painted cover



<b>Grip material</b>	Leather or vinyl
<b>Grip color</b>	Black
<b>Spokes</b>	Polished & black sandblasted 316L stainless steel
<b>Center cap</b>	Chrome plated
<b>Floating cap</b>	Available upon request
<b>Standard 3/4" hub</b>	Included
<b>QDH hub</b>	n.a.
<b>Certifications &amp; standards</b>	CE, UKCA, NMMA; ISO 23411 & ABYC P22

# SORANZO



VERO VOLANTE ITALIANO



  
CHRISTIANGRANDE  
DesignWorks

Soranzo L B/L/L



350 mm (13.8")  $\emptyset$



97 mm (3.8") Depth





**Soranzo L B/L/L 24725H**  
 Black leather grip, grey stitches,  
 stainless steel spokes, black leather cover



**Soranzo L L/L/L 24727M**  
 Tan leather grip, cream stitches,  
 stainless steel spokes, tan leather painted cover



**Soranzo L BL/L/L 24726K**  
 Blue leather grip, light blue stitches,  
 stainless steel spokes, blue leather cover



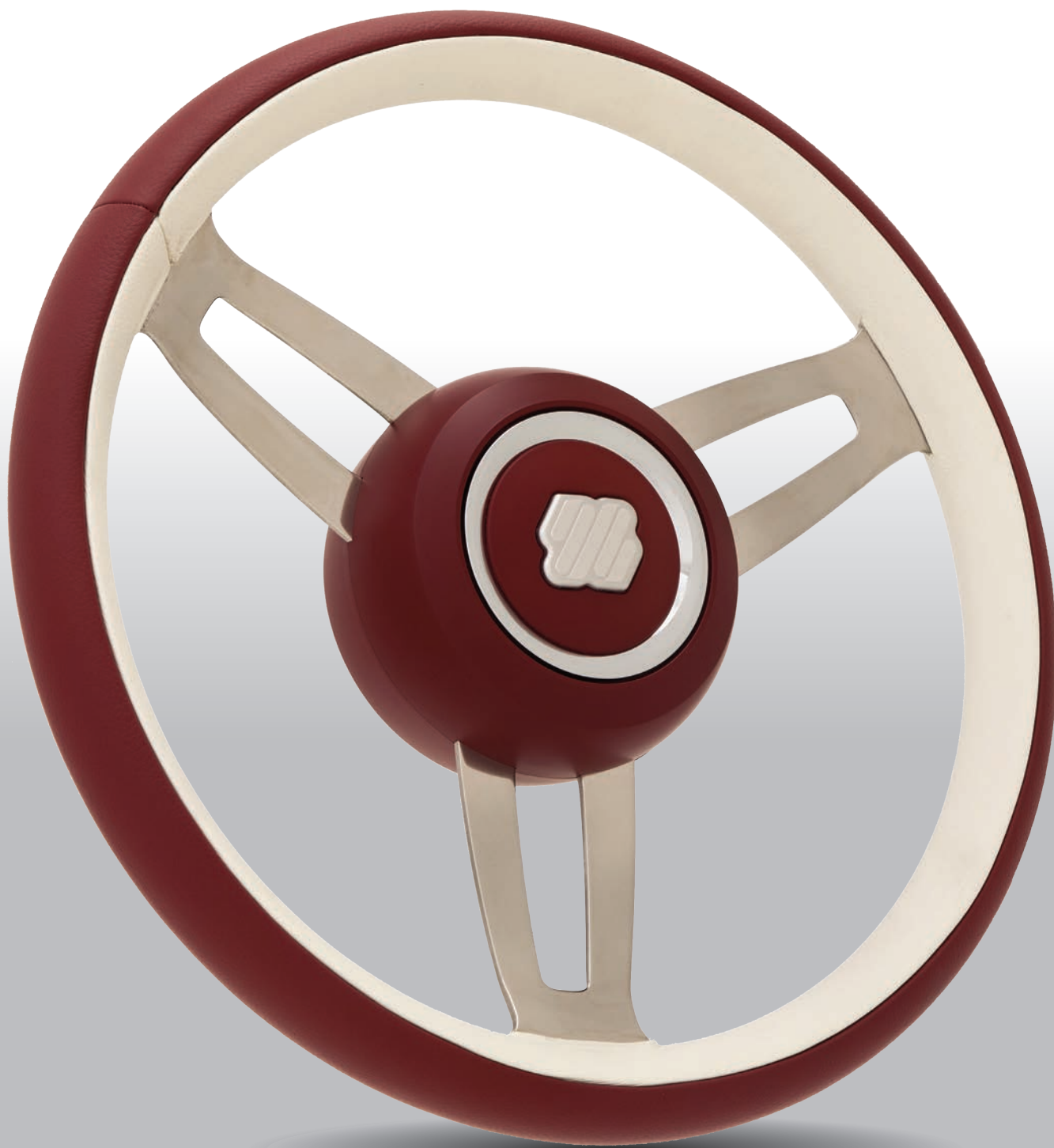
**Soranzo V B/B/L 24728P**  
 Black vinyl grip, light blue stitches,  
 stainless steel spokes, black painted cover

<b>Grip material</b>	Leather or vinyl
<b>Grip color</b>	Black, tan leather, blue
<b>Spokes</b>	Polished 316L stainless steel
<b>Center cap</b>	Leather or vinyl with embossed logo
<b>Floating cap</b>	Available upon request
<b>Standard 3/4" hub</b>	Included
<b>QDH hub</b>	n.a.
<b>Certifications &amp; standards</b>	CE, UKCA, NMMA; ISO 23411 & ABYC P22

# FREGOSO



VERO VOLANTE ITALIANO



  
CHRISTIANGRANDE  
DesignWorks

Fregoso LL AW/A/A



350 mm (13.8")  $\emptyset$



81 mm (3.2") Depth



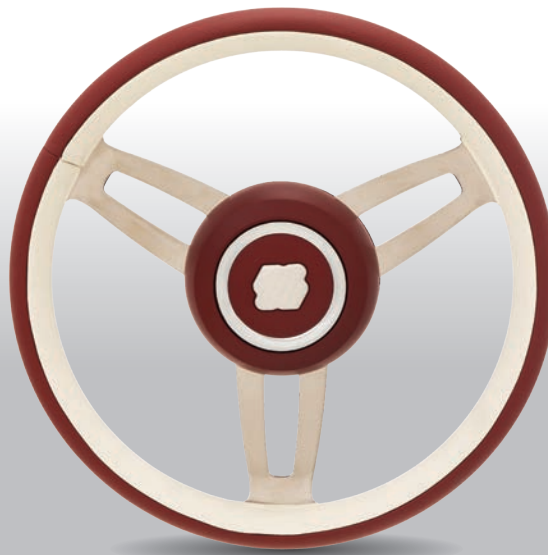
**Fregoso LV BC/B/C 24739V**

Black leather external grip, sand color vinyl internal grip, stainless steel spokes, black painted cover



**Fregoso VV LC/L/C 24740D**

Tan leather color vinyl external grip, sand color vinyl internal grip, stainless steel spokes, tan leather painted cover



**Fregoso LL AW/A/A 24741F**

Amaranth color leather external grip, white leather internal grip, stainless steel spokes, amaranth painted cover

<b>Grip material</b>	Leather, vinyl
<b>Grip color</b>	Black and sand, tan leather and sand, amaranth and white
<b>Spokes</b>	Polished 304 stainless steel
<b>Center cap</b>	Sand color vinyl or amaranth painted
<b>Floating cap</b>	n.a.
<b>Standard 3/4" hub</b>	Included
<b>QDH hub</b>	Available upon request (to be specified when ordering the wheel)
<b>Certifications &amp; standards</b>	CE, UKCA, NMMA; ISO 23411 & ABYC P22

# GUARCO



VERO VOLANTE ITALIANO



Guarco L B/SS/CH



350 mm (13.8")  $\emptyset$



96 mm (3.8") Depth



**Guarco L B/SS/CH 24737R**  
 Black leather grip, grey stitches,  
 stainless steel spokes, chrome plated cover



**Guarco L B/SS/B 24736N**  
 Black leather grip, black stitches,  
 stainless steel spokes, matt black painted cover



**Guarco L B/SS/B**

<b>Grip material</b>	Leather
<b>Grip color</b>	Black
<b>Spokes</b>	Polished 316L stainless steel
<b>Center cap</b>	Black polished with pad printed logo
<b>Floating cap</b>	Available upon request
<b>Standard 3/4" hub</b>	Included
<b>QDH hub</b>	n.a.
<b>Certifications &amp; standards</b>	CE, UKCA, NMMA; ISO 23411 & ABYC P22

# SPINOLA



VERO VOLANTE ITALIANO



Spinola L B/P



350 mm (13.8")  $\emptyset$



82 mm (3.22") Depth



**Spinola L B/P 23902Y**

Black leather grip, polished stainless steel spokes,  
stainless steel cover



**Spinola V B/P 23901W**

Black vinyl grip, polished stainless steel spokes,  
stainless steel cover



**Spinola L B/BRU 23900U**

Black leather grip, brushed SS spokes,  
stainless steel cover



**Spinola V B/BRU 23899N**

Black vinyl grip, brushed stainless steel spokes,  
stainless steel cover

<b>Grip material</b>	Leather or vinyl
<b>Grip color</b>	Black
<b>Spokes</b>	Polished or brushed 316L stainless steel
<b>Center cap</b>	Leather or vinyl with embossed logo
<b>Floating cap</b>	Available upon request
<b>Standard 3/4" hub</b>	Included
<b>QDH hub</b>	n.a.
<b>Certifications &amp; standards</b>	CE, UKCA, NMMA; ISO 23411 & ABYC P22

# TRON



VERO VOLANTE ITALIANO



Tron L B/SS/PU



350 mm (13.8")  $\varnothing$



98 mm (3.85") Depth





**Tron L B/SS/PU 22125W**  
 Black leather grip, stainless steel spokes,  
 black polyurethane cover



**Tron V B/SS/PU 22321W**  
 Black vinyl grip, stainless steel spokes,  
 black polyurethane cover



**Tron PU B/SS/PU 22124U**  
 Black polyurethane grip, stainless steel spokes,  
 black polyurethane cover

<b>Grip material</b>	Leather or vinyl or leather look polyurethane
<b>Grip color</b>	Black
<b>Spokes</b>	Polished 316L stainless steel
<b>Center cap</b>	Chrome plated
<b>Floating cap</b>	Available upon request
<b>Standard 3/4" hub</b>	Included
<b>QDH hub</b>	n.a.
<b>Certifications &amp; standards</b>	CE, UKCA, NMMA; ISO 23411 & ABYC P22

# DOLFIN



VERO VOLANTE ITALIANO



Dolfin L B/B/Pw



350 mm (13.8")  $\emptyset$



93 mm (3.66") Depth



**Dolphin L B/B/B 23023T**

Black leather grip, stainless steel black spokes with black inserts, black painted cover



**Dolphin L B/B/Pw 23591H**

Black leather grip, stainless steel black spokes with pewter look painted inserts and cover



**Dolphin L B/SS/B 69562J**

Black leather grip, stainless steel polished spokes with black inserts, black painted cover



**Dolphin V B/SS/B 69561G**

Black vinyl grip, stainless steel polished spokes with black inserts, black painted cover

<b>Grip material</b>	Leather or vinyl
<b>Grip color</b>	Black
<b>Spokes</b>	316L stainless steel polished or black
<b>Center cap</b>	Black painted
<b>Floating cap</b>	Available upon request
<b>Standard 3/4" hub</b>	Included
<b>QDH hub</b>	n.a.
<b>Certifications &amp; standards</b>	CE, UKCA, NMMA; ISO 23411 & ABYC P22

# VIVALDI



VERO VOLANTE ITALIANO



  
CHRISTIANGRANDE  
DesignWorks

Vivaldi L B/L/L



350 mm (13.8")  $\emptyset$



95 mm (3.74") Depth



**Vivaldi L B/L/L 24721Z**  
 Black leather grip,  
 stainless steel spokes, black leather cover



**VIVALDI V B/B/L 24723D**  
 Black vinyl grip,  
 stainless steel spokes, black painted cover



**Vivaldi PU B/B/L 24724F**  
 Black polyurethane grip, stainless steel spokes,  
 black painted cover



**Vivaldi V W/W/SS 24722B**  
 White vinyl grip, stainless steel spokes,  
 white painted cover

<b>Grip material</b>	Leather or vinyl or leather look polyurethane
<b>Grip color</b>	Black or white
<b>Spokes</b>	Polished 304 stainless steel
<b>Center cap</b>	Leather or stainless steel
<b>Floating cap</b>	Available upon request
<b>Standard 3/4" hub</b>	Included
<b>QDH hub</b>	n.a.
<b>Certifications &amp; standards</b>	CE, UKCA, NMMA; ISO 23411 & ABYC P22

# MOROSINI



VERO VOLANTE ITALIANO



  
CHRISTIANGRANDE  
DesignWorks

Morosini L B/CH/L



350 mm (13.8")  $\emptyset$



82 mm (3.23") Depth



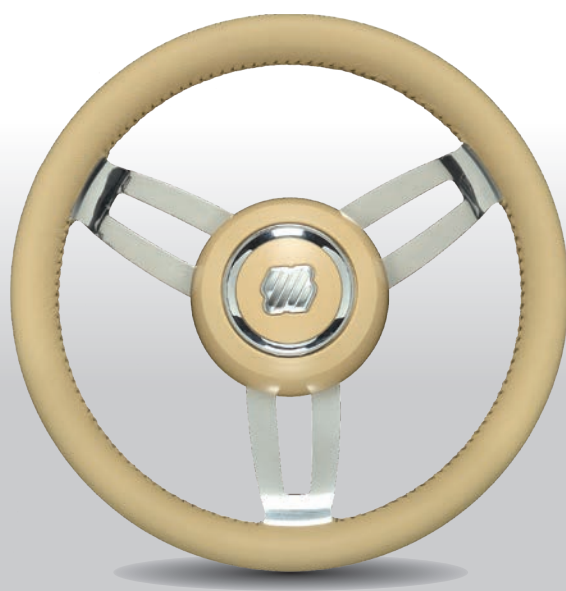
**Morosini L B/CH/L 67297F**  
Black leather grip, stainless steel spokes,  
chrome plated cover



**Morosini V B/CH/V 68000H**  
Black vinyl grip, stainless steel spokes,  
chrome plated cover



**Morosini PU B/CH/V 67461S**  
Black polyurethane grip, stainless steel  
spokes, chrome plated cover



**Morosini L C/P/P 67299K**  
Cream leather grip, stainless steel spokes,  
cream painted cover

<b>Grip material</b>	Leather or vinyl or mahogany or leather look polyurethane
<b>Grip color</b>	Black, cream
<b>Spokes</b>	Polished 304 stainless steel
<b>Center cap</b>	Leather or vinyl or painted
<b>Floating cap</b>	n.a.
<b>Standard 3/4" hub</b>	Included
<b>QDH hub</b>	Available upon request (to be specified when ordering the wheel)
<b>Certifications &amp; standards</b>	CE, UKCA, NMMA; ISO 23411 & ABYC P22

# MOROSINI



VERO VOLANTE ITALIANO



  
CHRISTIANGRANDE  
DesignWorks

Morosini M/CH/BR



350 mm (13.8")  $\emptyset$



82 mm (3.23") Depth





**Morosini M/CH/BR** 68378L  
Mahogany grip,  
stainless steel spokes, chrome plated cover



**Morosini V W/P/P** 68831E  
White vinyl grip, stainless steel spokes, white painted cover  
**Morosini L W/P/P** 67298H  
White leather grip, stainless steel spokes, white painted cover



**Morosini L G/CH/L** 67300R  
Grey leather grip,  
stainless steel spokes, chrome plated cover



**Morosini V G/CH/V** 68830C  
Grey vinyl grip,  
stainless steel spokes, chrome plated cover

<b>Grip material</b>	Leather or vinyl or mahogany or leather look polyurethane
<b>Grip color</b>	Grey, white, mahogany
<b>Spokes</b>	Polished 304 stainless steel
<b>Center cap</b>	Leather or vinyl or painted or burl wood
<b>Floating cap</b>	n.a.
<b>Standard 3/4" hub</b>	Included
<b>QDH hub</b>	Available upon request (to be specified when ordering the wheel)
<b>Certifications &amp; standards</b>	CE, UKCA, NMMA; ISO 23411 & ABYC P22

# GRITTI



VERO VOLANTE ITALIANO



Gritti Carbon LC B/SS/B



350 mm (13.8")  $\emptyset$



86 mm (3.4") Depth



**Gritti Carbon LC B/SS/B 24719N**  
 Black leather with glossy carbon grip,  
 stainless steel spokes and cover



**Gritti Carbon LC B/SS/R 24921H**  
 Black leather with red stiches and matt carbon grip,  
 stainless steel spokes and cover



**Gritti Alutec LA B/SS/B 24720X**  
 Black perforated leather and alutec grip,  
 stainless steel spokes and cover

<b>Grip material</b>	Leather and alutec or leather and carbon
<b>Grip color</b>	Black and carbon or black and alutec
<b>Spokes</b>	Polished 304 stainless steel
<b>Center cap</b>	Leather with embossed logo
<b>Floating cap</b>	Available upon request
<b>Standard 3/4" hub</b>	Included
<b>QDH hub</b>	n.a.
<b>Certifications &amp; standards</b>	CE, UKCA, NMMA; ISO 23411 & ABYC P22

# FOSCARI



VERO VOLANTE ITALIANO



  
CHRISTIANGRANDE  
DesignWorks

Foscari V B/R



350 mm (13.8")  $\emptyset$



82 mm (3.23") Depth



**Foscari V B/R 21552L**  
 Black vinyl grip, red stitches,  
 stainless steel spokes, stainless steel cover



**Foscari PU B 67303X**  
 Black polyurethane grip, stainless steel spokes,  
 stainless steel cover



**Foscari PU W 67302V**  
 White polyurethane grip, stainless steel spokes,  
 stainless steel cover



**Foscari PU C 67304Z**  
 Cream polyurethane grip, stainless steel spokes,  
 stainless steel cover

<b>Grip material</b>	Vinyl or leather look polyurethane
<b>Grip color</b>	Black, white, cream
<b>Spokes</b>	Polished 304 stainless steel
<b>Center cap</b>	Stainless steel
<b>Floating cap</b>	n.a.
<b>Standard 3/4" hub</b>	Included
<b>QDH hub</b>	Available upon request
<b>Certifications &amp; standards</b>	CE, UKCA, NMMA; ISO 23411 & ABYC P22

# ADORNO



VERO VOLANTE ITALIANO



Adorno L B/CH



350 mm (13.8")  $\varnothing$



81 mm (3.19") Depth



**Adorno L B/CH 69169G**  
 Black leather grip, stainless steel spokes,  
 stainless steel cover



**Adorno PU B/CH 69167C**  
 Black polyurethane grip, stainless steel spokes,  
 stainless steel cover



<b>Grip material</b>	Leather or leather look polyurethane
<b>Grip color</b>	Black
<b>Spokes</b>	Polished 304 stainless steel
<b>Center cap</b>	Polished stainless steel
<b>Floating cap</b>	n.a.
<b>Standard 3/4" hub</b>	Included
<b>QDH hub</b>	Available upon request
<b>Certifications &amp; standards</b>	CE, UKCA, NMMA; ISO 23411 & ABYC P22

# IMPERIALE



VERO VOLANTE ITALIANO



Imperiale V B/SS/P



350 mm (13.8")  $\varnothing$



68 mm (2.68") Depth





**Imperiale V B/SS/P 21299B**  
 Black vinyl grip,  
 brushed stainless steel spokes with polished  
 edges, black painted cover



**Imperiale PU B/S/P 21300G**  
 Black polyurethane grip,  
 brushed aluminum spokes with polished edges,  
 black painted cover



<b>Grip material</b>	Vinyl or leather look polyurethane
<b>Grip color</b>	Black
<b>Spokes</b>	Brushed 316L stainless steel or brushed silver aluminum with polished edges
<b>Center cap</b>	Chrome plated
<b>Floating cap</b>	n.a.
<b>Standard 3/4" hub</b>	Included
<b>QDH hub</b>	n.a.
<b>Certifications &amp; standards</b>	CE, UKCA, NMMA; ISO 23411 & ABYC P22

# MANIN



VERO VOLANTE ITALIANO



Manin PU B/S



350 mm (13.8")  $\varnothing$



90 mm (3.54") Depth



**Manin PU B/SS 68204A**

Black polyurethane grip, stainless steel spokes,  
chrome plated cover



**Manin PU B/S 68205C**

Black polyurethane grip, silver aluminum spokes,  
chrome plated cover



**Manin PU B/B 68206E**

Black polyurethane grip, black aluminum spokes,  
chrome plated cover

<b>Grip material</b>	Leather look polyurethane
<b>Grip color</b>	Black
<b>Spokes</b>	Polished 304 stainless steel or silver or black anodized aluminum
<b>Center cap</b>	Chrome plated
<b>Floating cap</b>	Available upon request
<b>Standard 3/4" hub</b>	Included
<b>QDH hub</b>	Available upon request
<b>Certifications &amp; standards</b>	CE, UKCA, NMMA; ISO 23411 & ABYC P22

# GRIMANI



VERO VOLANTE ITALIANO



Grimani PU B/S/VE



350 mm (13.8")  $\varnothing$



90 mm (3.54") Depth



**Grimani PU B/SS/CH 69198P**

Black polyurethane grip with chrome plated inserts, stainless steel spokes, black painted and chrome plated cover



**Grimani PU B/S/VE 69297S**

Black polyurethane grip with silver painted inserts, silver aluminum spokes, black and silver painted cover



**Grimani PU B/B/CH 69298U**

Black polyurethane grip with chrome plated inserts, black aluminum spokes, black painted and chrome plated cover

<b>Grip material</b>	Leather look polyurethane with inserts
<b>Grip color</b>	Black with silver or chrome plated inserts
<b>Spokes</b>	Polished 304 stainless steel or silver or black anodized aluminum
<b>Center cap</b>	Black painted
<b>Floating cap</b>	Available upon request
<b>Standard 3/4" hub</b>	Included
<b>QDH hub</b>	Available upon request
<b>Certifications &amp; Standards</b>	CE, UKCA, NMMA; ISO 23411 & ABYC P22

# GRIMANI



VERO VOLANTE ITALIANO



Grimani PU B/S/R



350 mm (13.8")  $\emptyset$



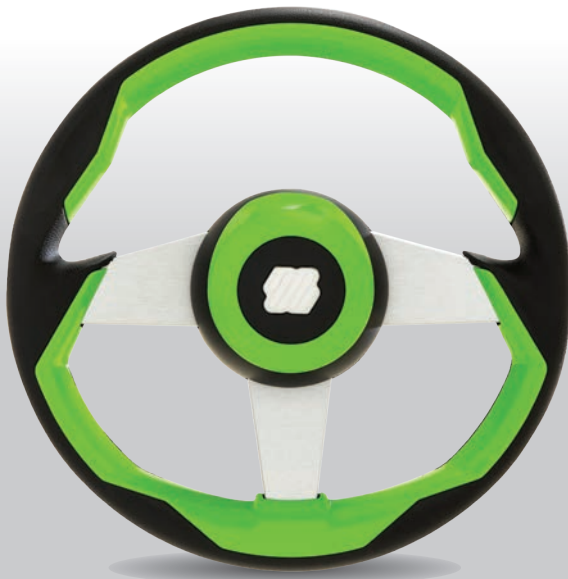
90 mm (3.54") Depth



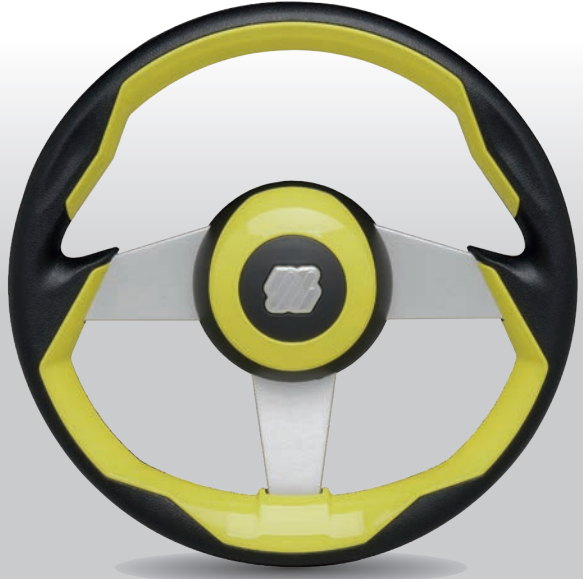
**Grimani PU B/S/BL 69480G**  
 Black polyurethane grip with blue inserts,  
 silver aluminum spokes,  
 black and blue painted cover



**Grimani PU B/S/R 69481J**  
 Black polyurethane grip with red inserts,  
 silver aluminum spokes,  
 black and red painted cover



**Grimani PU B/S/KG 20836W**  
 Black polyurethane grip with green inserts,  
 silver aluminum spokes,  
 black and green painted cover



**Grimani PU B/S/Y 69482L**  
 Black polyurethane grip with yellow inserts,  
 silver aluminum spokes,  
 black and yellow painted cover

<b>Grip material</b>	Leather look polyurethane with inserts
<b>Grip color</b>	Black with colored inserts
<b>Spokes</b>	Silver anodized aluminum
<b>Center cap</b>	Black painted
<b>Floating cap</b>	Available upon request
<b>Standard 3/4" hub</b>	Included
<b>QDH hub</b>	Available upon request
<b>Certifications &amp; standards</b>	CE, UKCA, NMMA; ISO 23411 & ABYC P22

# LOREDAN



VERO VOLANTE ITALIANO



Loredan PU B/SS/CH



350 mm (13.8")  $\varnothing$



92,5 mm (3.64") Depth





**Loredan PU B/SS/CH 69557S**

Black polyurethane grip with chrome plated inserts, stainless steel spokes, chrome plated and black painted cover



**Loredan PU B/S/CH 69558U**

Black polyurethane grip with chrome plated inserts, silver aluminum spokes, black and chrome plated cover



**Loredan PU B/B/CH 69559W**

Black polyurethane grip with chrome plated inserts, black aluminum spokes, chrome plated and black painted cover

<b>Grip material</b>	Leather look polyurethane with inserts
<b>Grip color</b>	Black with chrome plated inserts
<b>Spokes</b>	Polished 304 stainless steel or silver or black anodized aluminum
<b>Center cap</b>	Black painted
<b>Floating cap</b>	Available upon request
<b>Standard 3/4" hub</b>	Included
<b>QDH hub</b>	Available upon request
<b>Certifications &amp; standards</b>	CE, UKCA, NMMA; ISO 23411 & ABYC P22

# DORIA



VERO VOLANTE ITALIANO



Doria PU B/S/R



350 mm (13.8")  $\emptyset$



74 mm (2.91") Depth



**Doria PU B/S/R 67309K**

Black polyurethane grip with red painted inserts,  
silver painted spokes



**Doria PU B/S/B 67465A**

Black polyurethane grip with black painted inserts,  
silver painted spokes



**Doria PU B/CH/CH 69706G**

Black polyurethane grip with chrome plated inserts,  
chrome plated spokes

<b>Grip material</b>	Leather look polyurethane with inserts
<b>Grip color</b>	Black with red or black or chrome plated inserts
<b>Spokes</b>	Silver painted or chrome plated
<b>Center cap</b>	Red or black painted
<b>Floating cap</b>	n.a.
<b>Standard 3/4" hub</b>	Included
<b>QDH hub</b>	n.a.
<b>Certifications &amp; standards</b>	CE, UKCA, NMMA; ISO 23411 & ABYC P22

# FALIER



VERO VOLANTE ITALIANO



Falier V B/BRU/L



350 mm (13.8")  $\varnothing$



84 mm (3.3") Depth



**Falier V B/BRU/L 24733G**  
 Black vinyl grip with grey stitches,  
 stainless steel brushed spokes,  
 stainless steel brushed cover



**Falier PU B/BRU/B 24734J**  
 Black polyurethane grip,  
 stainless steel brushed spokes,  
 stainless steel brushed cover



**Falier PU G/BRU/G 24735L**  
 Grey polyurethane grip,  
 stainless steel brushed spokes,  
 stainless steel brushed cover

<b>Grip material</b>	Vinyl or leather look polyurethane
<b>Grip color</b>	Black or grey
<b>Spokes</b>	Brushed 316L stainless steel
<b>Center cap</b>	Black or gray leather with embossed logo
<b>Floating cap</b>	Available upon request
<b>Standard 3/4" hub</b>	Included
<b>QDH hub</b>	n.a.
<b>Certifications &amp; Standards</b>	CE, UKCA, NMMA; ISO 23411 & ABYC P22

# CAPTIVA

Heated steering wheel



VERO VOLANTE ITALIANO



Captiva HU/B



350 mm (13.8")  $\emptyset$



85 mm (3.34") Depth



**Captiva HU/B 24995P**  
 Heated steering wheel,  
 stainless steel and TPU grip and spokes,  
 methacrylate inserts



- Power switch embedded in the spoke
- Two available heating modes: **COMFORT** and **HIGH**
- Sliding contact power supply
- LED dimmer (day/night)
- Low voltage monitoring and disconnection
- 12V DC and 24V DC power supply (50 W draw)
- Fits front mount Ultraflex hydraulic helmets UP25-28-33-39-45 (UP18 and UP20 excluded)
- Fits Ultraflex electronic tilt helmets
- Fits all Ultraflex tilt mechanisms, featuring internal routing of the wire
- Class IP68
- Patented

<b>Grip material</b>	Polished 316L stainless steel and TPU (rear)
<b>Grip color</b>	Polished stainless steel and black TPU
<b>Spokes</b>	Polished 316L stainless steel and TPU with black methacrylate inserts
<b>Center nut</b>	Polished stainless steel
<b>Floating cap</b>	n.a.
<b>Standard 3/4" hub</b>	Included
<b>QDH hub</b>	n.a.
<b>Certifications &amp; standards</b>	CE, UKCA, NMMA; ISO 23411 & ABYC P22

# CAPTIVA



VERO VOLANTE ITALIANO



Captiva BK



350 mm (13.8")  $\varnothing$



85 mm (3.34") Depth





**Captiva B 24994M**

Stainless steel and TPU grip,  
stainless steel and TPU spokes  
with black methacrylate inserts



**Captiva BK 25454H**

Stainless steel and TPU grip,  
stainless steel and TPU spokes  
with black methacrylate inserts. Knob included.



**Captiva B with Knob SK 25458S (ordered as retrofit)**

<b>Grip material</b>	Polished 316L stainless steel and TPU (rear)
<b>Grip color</b>	Polished stainless steel and black TPU
<b>Spokes</b>	Polished 316L stainless steel and TPU with black methacrylate inserts
<b>Center nut</b>	Polished stainless steel
<b>Knob</b>	Included in Captiva BK
<b>Knob SK 25458S</b>	Speed knob for Captiva B ordered as retrofit
<b>Floating cap</b>	n.a.
<b>Standard 3/4" hub</b>	Included
<b>QDH hub</b>	n.a.
<b>Cert. &amp; standards</b>	CE, UKCA, NMMA; ISO 23411 & ABYC P22

# CAPTIVA



VERO VOLANTE ITALIANO



Captiva G



350 mm (13.8")  $\emptyset$



85 mm (3.34") Depth



**Captiva G 25853Y**  
Stainless steel and TPU grip,  
stainless steel and TPU spokes  
with grey painted ABS inserts.



**Captiva GK 25851U**  
Stainless steel and TPU grip, stainless steel  
and TPU spokes with grey painted ABS inserts.  
Knob included.



**Captiva SF 25852W**  
Stainless steel and TPU grip,  
stainless steel and TPU spokes  
with seafoam painted ABS inserts.



**Captiva SFK 25850S**  
Stainless steel and TPU grip, stainless steel  
and TPU spokes with seafoam painted ABS inserts.  
Knob included.

<b>Grip material</b>	Polished 316L stainless steel and TPU (rear)
<b>Grip color</b>	Polished stainless steel and black TPU
<b>Spokes</b>	Polished 316L stainless steel and TPU with grey or seafoam painted ABS inserts
<b>Center nut</b>	Polished stainless steel
<b>Knob</b>	Included in Captiva GK e Captiva SFK
<b>Knob SK 25458S</b>	Speed knob for Captiva G e Captiva SF ordered as retrofit
<b>Floating cap</b>	n.a.
<b>Standard 3/4" hub</b>	Included
<b>QDH hub</b>	n.a.
<b>Cert. &amp; standards</b>	CE, UKCA, NMMA; ISO 23411 & ABYC P22

# CONTARINI



VERO VOLANTE ITALIANO



Contarini TPU/SS



350 mm (13.8")  $\emptyset$



79.5 mm (3.13") Depth



**Contarini TPU/SS 69199S**  
 Black TPU and stainless steel grip,  
 stainless steel spokes,  
 stainless steel cover



**Contarini 69199S with Knob SK 25458S**  
 Speed knob for Contarini steering wheel  
 ordered as retrofit



<b>Grip material</b>	TPU and polished 316L stainless steel
<b>Grip color</b>	Black and polished stainless steel
<b>Spokes</b>	Polished 316L stainless steel
<b>Center cap</b>	Black painted
<b>Floating cap</b>	n.a.
<b>Standard 3/4" hub</b>	Included
<b>QDH hub</b>	n.a.
<b>Certifications &amp; standards</b>	CE, UKCA, NMMA; ISO 23411 & ABYC P22

# SIESTAKEY



VERO VOLANTE ITALIANO



Siestakey B



368 mm (14.5")  $\varnothing$



90 mm (3.54") Depth



**Siestakey B 68188F**  
 stainless steel and black TPU grip,  
 stainless steel spokes, black cover



**Siestakey B 68188F with Knob/SK 25458S**  
 Speed knob for Siestakey steering wheel  
 ordered as retrofit



<b>Grip material</b>	Polished 316L stainless steel and TPU
<b>Grip color</b>	Polished stainless steel and black TPU
<b>Spokes</b>	Polished 316L stainless steel
<b>Cover</b>	black
<b>Standard 3/4" hub</b>	Included
<b>QDH hub</b>	n.a.
<b>Certifications &amp; standards</b>	CE, UKCA, NMMA; ISO 23411 & ABYC P22

# KEYWEST



VERO VOLANTE ITALIANO



Keywest BLCK

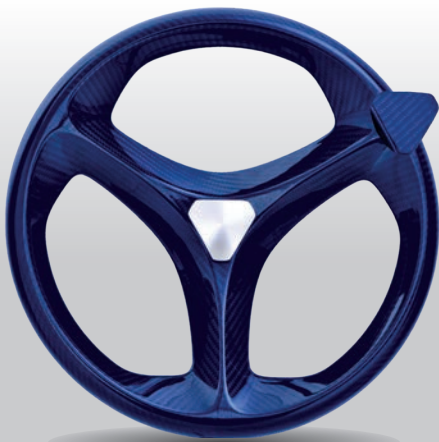


350 mm (13.8")  $\varnothing$



96 mm (3.77") Depth





**Keywest BLCK** 25481L  
Polished blue carbon fiber  
and TPU grip and spokes.  
Knob included



**Keywest PCK** 25479A  
Polished carbon fiber  
and TPU grip and spokes.  
Knob included



**Keywest MCK** 25480J  
Matt carbon fiber  
and TPU grip and spokes.  
Knob included



**Keywest BLC** 25484T  
Polished blue carbon fiber  
and TPU grip and spokes.



**Keywest PC** 25482N  
Polished carbon fiber  
and TPU grip and spokes.



**Keywest MC** 25483R  
Matt carbon fiber  
and TPU grip and spokes.

<b>Frame</b>	Carbon fiber
<b>Grip material</b>	Polished, matt, blue carbon fiber and TPU
<b>Spokes</b>	Carbon fiber and TPU
<b>Floating cap</b>	n.a.
<b>Standard 3/4" hub</b>	included
<b>QDH hub</b>	n.a.
<b>Certifications &amp; standards</b>	CE, UKCA, NMMA; ISO 23411 & ABYC P22

# Montecristo

## Polyurethane grip steering wheels



**Montecristo B/SS/CH 20470D**  
 Ø 350 mm (13.8") Depth 94 mm (3.7")  
 Black polyurethane grip, stainless steel spokes,  
 black painted cover



**Montecristo B/S/S 20350T**  
 Ø 350 mm (13.8") Depth 98 mm (3.86")  
 Black polyurethane grip, silver aluminum spokes,  
 black painted cover



**Montecristo B/B/CH 20351V**  
 Ø 350 mm (13.8") Depth 98 mm (3.86")  
 Black polyurethane grip, black aluminum spokes,  
 black painted cover



**Montecristo B/B/P/CH 23590F**  
 Ø 350 mm (13.8") Depth 98 mm (3.86")  
 Black polyurethane grip, black aluminum spokes  
 with chrome plated inserts

### MONTECRISTO

<b>Grip material</b>	Leather look polyurethane
<b>Grip color</b>	Black
<b>Spokes</b>	Polished 304 stainless steel or silver or black anodized aluminum
<b>Center cap</b>	Chrome plated, or silver or black painted.
<b>Floating cap</b>	Available upon request
<b>Standard 3/4" hub</b>	<b>X63 – 40119D not included</b>
<b>QDH hub</b>	Available upon request
<b>Certifications &amp; Standards</b>	CE, NMMA; ISO 23411 & ABYC P22

## Vinyl or polyurethane grip steering wheels

# Asinara



**Asinara V B/SS/L 24732E**  
 Ø 350 mm (13.8") Depth 92 mm (3.62")  
 Black vinyl grip,  
 stainless steel spokes and cover



**Asinara PU B/SS/B 24729S**  
 Ø 350 mm (13.8") Depth 95mm (3.74")  
 Black polyurethane grip,  
 stainless steel spokes and cover



**Asinara PU B/S/B 24730A**  
 Ø 350 mm (13.8") Depth 95mm (3.74")  
 Black polyurethane grip,  
 silver aluminum spokes, stainless steel cover



**Asinara PU B/B/B 24731C**  
 Ø 350 mm (13.8") Depth 95mm (3.74")  
 Black polyurethane grip,  
 black aluminum spokes, stainless steel cover

### ASINARA

<b>Grip material</b>	Vinyl or leather look polyurethane
<b>Grip color</b>	Black
<b>Spokes</b>	304 stainless steel or silver or black anodized aluminum
<b>Center cap</b>	Black leather with embossed logo
<b>Floating cap</b>	Available upon request
<b>Standard 3/4" hub</b>	<b>X63 – 40119D not included</b>
<b>QDH hub</b>	Available upon request
<b>Certifications &amp; Standards</b>	CE, NMMA; ISO 23411 & ABYC P22

# Capraia - Tavolara

## Polyurethane grip steering wheels



**CAPRAIA B/S 22958X**  
 Ø 350 mm (13.8") Depth 84mm (3.3")  
 Black polyurethane grip,  
 silver aluminum spokes



**CAPRAIA B/B 22959Z**  
 Ø 350 mm (13.8") Depth 84mm (3.3")  
 Black polyurethane grip,  
 black aluminum spokes



**Tavolara B/B/CH 23916K**  
 Ø 350 mm (13.8") Depth 89 mm (3.5")  
 Black polyurethane grip, black aluminum spokes,  
 chrome plated cover



**Tavolara B/S/CH 65277N**  
 Ø 350 mm (13.8") Depth 89 mm (3.5")  
 Black polyurethane grip, silver aluminum spokes,  
 chrome plated cover

### CAPRAIA

### TAVOLARA

<b>Grip material</b>	Leather look polyurethane	Leather look polyurethane
<b>Grip color</b>	Black	Black
<b>Spokes</b>	Silver or black anodized aluminum	Silver or black anodized aluminum
<b>Floating cap</b>	n.a.	n.a.
<b>Standard 3/4" hub</b>	<b>X63 – 40119D not included</b>	<b>X63 – 40119D not included</b>
<b>QDH hub</b>	Available upon request	Available upon request
<b>Certifications &amp; Standards</b>	CE, NMMA; ISO 23411 & ABYC P22	CE, NMMA; ISO 23411 & ABYC P22

Polyurethane grip steering wheels

**Domino**



**Domino B/B/CH 23897J**  
 Ø 350 mm (13.8") Depth 88 mm (3.46")  
 Black polyurethane grip, black aluminum spokes,  
 chrome plated cover



**Domino B/S 23895E**  
 Ø 350 mm (13.8") Depth 88 mm (3.46")  
 Black polyurethane grip,  
 silver aluminum spokes and ring



**Domino B/B 23896G**  
 Ø 350 mm (13.8") Depth 88 mm (3.46")  
 Black polyurethane grip,  
 black aluminum spokes and ring

**DOMINO**

<b>Grip material</b>	Leather look polyurethane
<b>Grip color</b>	Black
<b>Spokes</b>	Silver or black anodized aluminum
<b>Floating cap</b>	n.a.
<b>Standard 3/4" hub</b>	<b>X63 – 40119D not included</b>
<b>QDH hub</b>	Available upon request
<b>Certifications &amp; Standards</b>	CE, NMMA; ISO 23411 & ABYC P22

# Pianosa

## Polyurethane grip steering wheels



**Pianosa B/S 22322Y**

Ø 350 mm (13.8") Depth 88 mm (3.46")  
 Black polyurethane grip, silver aluminum spokes,  
 polished aluminum ring



**Pianosa B/B 22960H**

Ø 350 mm (13.8") Depth 88 mm (3.46")  
 Black polyurethane grip, black aluminum spokes,  
 black painted aluminum ring



**Pianosa B/SS 22961K**

Ø 350 mm (13.8") Depth 88 mm (3.46")  
 Black polyurethane grip, stainless steel spokes,  
 polished aluminum ring

### PIANOSA

<b>Grip material</b>	Leather look polyurethane
<b>Grip color</b>	Black
<b>Spokes</b>	Stainless steel or silver or black anodized aluminum
<b>Floating cap</b>	n.a.
<b>Standard 3/4" hub</b>	<b>X63 – 40119D not included</b>
<b>QDH hub</b>	Available upon request
<b>Certifications &amp; Standards</b>	CE, NMMA; ISO 23411 & ABYC P22

## Polyurethane grip steering wheels

# Ustica - Levanzo



**Ustica B/S/B 20926X**  
 Ø 330 mm (13") Depth 90 mm (3.54")  
 Black polyurethane grip, silver aluminum spokes,  
 black painted cover



**Ustica B/B/B 21622F**  
 Ø 330 mm (13") Depth 90 mm (3.54")  
 Black polyurethane grip, black aluminum spokes,  
 black painted cover



**Levanzo B/S/CH 20927Z**  
 Ø 330 mm (13") Depth 90 mm (3.54")  
 Black polyurethane grip with chrome plated inserts,  
 silver aluminum spokes, chrome plated cover



**KNOB/UST 21721H**  
 Knob for Ustica & Levanzo  
 steering wheels

	USTICA	LEVANZO
<b>Grip material</b>	Leather look polyurethane	Leather look polyurethane with chrome plated inserts
<b>Grip color</b>	Black	Black
<b>Spokes</b>	Silver or black anodized aluminum	Silver anodized aluminum
<b>Floating cap</b>	n.a.	n.a.
<b>Standard 3/4" hub</b>	<b>X63 – 40119D not included</b>	<b>X63 – 40119D not included</b>
<b>QDH hub</b>	Available upon request	Available upon request
<b>Certifications &amp; Standards</b>	CE, NMMA; ISO 23411 & ABYC P22	CE, NMMA; ISO 23411 & ABYC P22

# Vivara - Budelli Santorini- Mykonos

## Polyurethane grip steering wheels



**Vivara CH/P 64643G**

Ø 350 mm (13.8") Depth 88 mm (3.46")  
Black polyurethane grip with polished inserts,  
polished aluminum spokes



**Budelli CH/P 65294N**

Ø 350 mm (13.8") Depth 94 mm (3.7")  
Black polyurethane grip with polished inserts,  
polished aluminum spokes



**Santorini B/S 65995W**

Ø 350 mm (13.8") Depth 91 mm (3.58")  
Black polyurethane grip with silver painted inserts,  
silver aluminum spokes



**Mykonos B/S 68365B**

Ø 320 mm (12.6") Depth 83 mm (3.27")  
Black polyurethane grip with chrome plated inserts,  
silver aluminum spokes

	VIVARA	BUDELLI	SANTORINI and MYKONOS
<b>Grip material</b>	Polyurethane with polished inserts	Polyurethane with polished inserts	Polyurethane with inserts
<b>Grip color</b>	Black	Black	Black
<b>Spokes</b>	Polished aluminum	Polished aluminum	Silver anodized aluminum
<b>Floating cap</b>	n.a.	n.a.	n.a.
<b>Standard 3/4" hub</b>	<b>X63 – 40119D not included</b>	<b>X63 – 40119D not included</b>	<b>X63 – 40119D not included</b>
<b>QDH hub</b>	Available upon request	Available upon request	Available upon request
<b>Certifications &amp; Standards</b>	CE, NMMA; ISO 23411 & ABYC P22	CE, NMMA; ISO 23411 & ABYC P22	CE, NMMA; ISO 23411 & ABYC P22



## Polyurethane grip steering wheels

## Pantelleria - Giannutri



**Pantelleria B/S 22232X**  
 Ø 320 mm (12.6") Depth 90 mm (3.58")  
 Black polyurethane grip, silver aluminum spokes



**Pantelleria B/B 25102Z**  
 Ø 320 mm (12.6") Depth 90 mm (3.58")  
 Black polyurethane grip, black aluminum spokes



**Giannutri PU B/SS 23477P**  
 Ø 280 mm (11") Depth 69 mm (2.7")  
 Black polyurethane grip, stainless steel spokes,  
 polished ring



**Giannutri PU W/SS 23476H**  
 Ø 280 mm (11") Depth 69 mm (2.7")  
 White polyurethane grip, stainless steel spokes,  
 polished ring

### PANTELLERIA

### GIANNUTRI

<b>Grip material</b>	Leather look polyurethane	Leather look polyurethane
<b>Grip color</b>	Black	Black or white
<b>Spokes</b>	Silver anodized aluminum	Polished Stainless steel
<b>Floating cap</b>	n.a.	n.a.
<b>Standard 3/4" hub</b>	<b>X63 – 40119D not included</b>	<b>X63 – 40119D not included</b>
<b>QDH hub</b>	Available upon request	Available upon request
<b>Certifications &amp; Standards</b>	CE, NMMA; ISO 23411 & ABYC P22	CE, NMMA; ISO 23411 & ABYC P22



**Nisida B/S 61813P**  
 Ø 350 mm (13.8") Depth 85 mm (3.35")  
 Black polyurethane grip,  
 silver aluminum spokes



**Nisida B/B 61812M**  
 Ø 350 mm (13.8") Depth 85 mm (3.35")  
 Black polyurethane grip,  
 black aluminum spokes



**Palmaria B/B 63727H**  
 Ø 350 mm (13.8") Depth 88 mm (3.46")  
 Black polyurethane grip,  
 black aluminum spokes

	<b>NISIDA</b>	<b>PALMARIA</b>
<b>Grip material</b>	Leather look polyurethane	Leather look polyurethane
<b>Grip color</b>	Black	Black
<b>Spokes</b>	Silver or black anodized aluminum	Black anodized aluminum
<b>Floating cap</b>	n.a.	n.a.
<b>Standard 3/4" hub</b>	<b>X63 – 40119D not included</b>	<b>X63 – 40119D not included</b>
<b>QDH hub</b>	Available upon request	Available upon request
<b>Certifications &amp; Standards</b>	CE, NMMA; ISO 23411 & ABYC P22	CE, NMMA; ISO 23411 & ABYC P22



**Corsica B/S 383330**  
 Ø 350 mm (13.8") Depth 88 mm (3.46")  
 Black soft touch grip,  
 silver aluminum spokes



**Corsica B/B 38332N**  
 Ø 350 mm (13.8") Depth 88 mm (3.46")  
 Black soft touch grip,  
 black aluminum spokes



**Corsica W/S 38334P**  
 Ø 350 mm (13.8") Depth 88 mm (3.46")  
 White soft touch grip,  
 silver aluminum spokes



**Corsica G/S 38393H**  
 Ø 350 mm (13.8") Depth 88 mm (3.46")  
 Grey soft touch grip,  
 silver aluminum spokes

**CORSICA**

<b>Grip material</b>	Soft touch composite material
<b>Grip color</b>	Black, white, grey
<b>Spokes</b>	Silver or black anodized aluminum
<b>Floating cap</b>	n.a.
<b>Standard 3/4" hub</b>	<b>X63 – 40119D not included</b>
<b>QDH hub</b>	Available upon request
<b>Certifications &amp; Standards</b>	CE, NMMA; ISO 23411 & ABYC P22

# Razzoli - Capri

## Mahogany grip steering wheels



**Razzoli M/BR/BR 23612N**  
 Ø 350 mm (13.8") Depth 85,5 mm (3.37")  
 Mahogany grip, stainless steel spokes, burl cover



**Razzoli M/SS/BR 24703X**  
 Ø 350 mm (13.8") Depth 85,5 mm (3.37")  
 Mahogany grip, stainless steel spokes and cover



**Capri 62465Y**  
 Ø 320 mm (12.6") Depth 87 mm (3.43")  
 Mahogany grip, silver aluminum spokes

	<b>RAZZOLI</b>	<b>CAPRI</b>
<b>Grip material</b>	Mahogany	Mahogany
<b>Grip color</b>	Mahogany	Mahogany
<b>Spokes</b>	Stainless steel	Silver anodized aluminum
<b>Center cap</b>	Burl wood	
<b>Floating cap</b>	Available upon request	n.a.
<b>Standard 3/4" hub</b>	<b>X63 – 40119D not included</b>	<b>X63 – 40119D not included</b>
<b>QDH hub</b>	Available upon request	Available upon request
<b>Certifications &amp; Standards</b>	CE, NMMA; ISO 23411 & ABYC P22	CE, NMMA; ISO 23411 & ABYC P22

**Soft touch grip steering wheels  
hub included**

**V99 Portofino**



**V99 B/B/CH 43015G**

Ø 350 mm (13.8") Depth 78 mm (3")

Soft touch antishock thermoplastic grip and spokes with chrome plated inserts and black cover



**V99 B/CH/CH 43016J**

Ø 350 mm (13.8") Depth 78 mm (3")

Soft touch antishock thermoplastic grip and spokes with chrome plated inserts and cover



**V99 B/S/S 43404U**

Ø 350 mm (13.8") Depth 78 mm (3")

Soft touch antishock thermoplastic grip and spokes with silver inserts and cover



**V99 B/CB/CB 43405W**

Ø 350 mm (13.8") Depth 78 mm (3")

Soft touch antishock thermoplastic grip and spokes with carbon inserts and cover

**PORTOFINO**

<b>Grip material</b>	Soft touch antishock thermoplastic
<b>Grip color</b>	Black
<b>Spokes</b>	Black antishock thermoplastic material with inserts
<b>Floating cap</b>	n.a.
<b>Standard 3/4" hub</b>	Included
<b>QDH hub</b>	n.a.
<b>Certifications &amp; Standards</b>	CE, NMMA; ISO 23411 & ABYC P22

# V56

## Polyurethane grip, equidistant spoke steering wheels – hub included



### V56 B/CH 21351A

Ø 350 mm (13.8") Depth 95 mm (3.74")

Black polyurethane grip and spokes  
with chrome plated inserts



### V56 W/CH 21406Z

Ø 350 mm (13.8") Depth 95 mm (3.74")

White polyurethane grip and spokes  
with chrome plated inserts



### V56 G/CH 21407B

Ø 350 mm (13.8") Depth 95 mm (3.74")

Grey polyurethane grip and spokes  
with chrome plated inserts

### V56

Grip material	Polyurethane
Grip color	Black, white, gray
Spokes	Polyurethane with inserts
Floating cap	n.a.
Standard 3/4" hub	Included
QDH hub	n.a.
Certifications & Standards	CE, NMMA; ISO 23411 & ABYC P22

**Polyurethane grip, equidistant spoke steering wheels – hub included**

**V56**



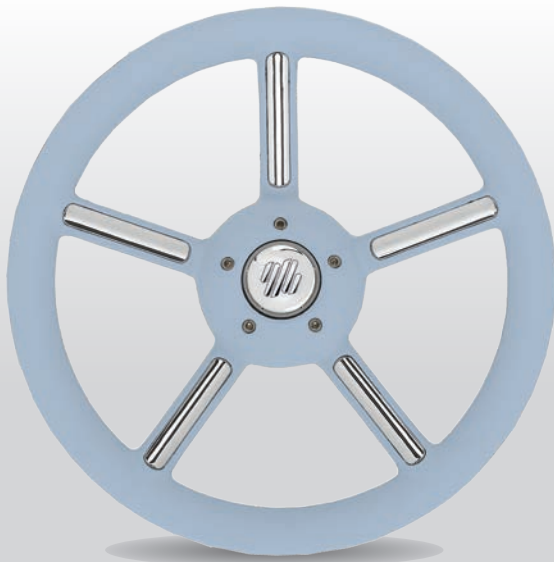
**V56 B/R 21524F**

Ø 350 mm (13.8") Depth 95 mm (3.74")  
Black polyurethane grip and spokes  
with red painted inserts



**V56 W/W 21596H**

Ø 350 mm (13.8") Depth 95 mm (3.74")  
White polyurethane grip and spokes  
with white painted inserts



**V56 SB/CH 21408D**

Ø 350 mm (13.8") Depth 95 mm (3.74")  
Soft blue polyurethane grip and spokes  
with chrome plated inserts



**KNOB V56 23600F**

Knob for V56 steering wheels  
ordered as retrofit

**V56**

<b>Grip material</b>	Polyurethane
<b>Grip color</b>	Black, white, soft blue
<b>Spokes</b>	Polyurethane with inserts
<b>Floating cap</b>	n.a.
<b>Standard 3/4" hub</b>	Included
<b>QDH hub</b>	n.a.
<b>Certifications &amp; Standards</b>	CE, NMMA; ISO 23411 & ABYC P22

## V70

### Polyurethane grip, equidistant spoke steering wheels – hub included



**V70B** 39442D

Ø 350 mm (13.8") Depth 93 mm (3.66")  
Black polyurethane grip, stainless steel spokes



**V70G** 39441B

Ø 350 mm (13.8") Depth 93 mm (3.66")  
Grey polyurethane grip, stainless steel spokes



**V70W** 39929J

Ø 350 mm (13.8") Depth 93 mm (3.66")  
White polyurethane grip, stainless steel spokes

#### V70

<b>Grip material</b>	Polyurethane
<b>Grip color</b>	Black, white, grey
<b>Spokes</b>	Stainless steel
<b>Floating cap</b>	n.a.
<b>Standard 3/4" hub</b>	Included
<b>QDH hub</b>	n.a.
<b>Certifications &amp; Standards</b>	CE, NMMA; ISO 23411 & ABYC P22



**Polyurethane grip, equidistant spoke steering wheels - hub included**

**V15**



**V15 B/SS/F 22325E**  
 Ø 350 mm (13.8") Deph 94 mm (3.7")  
 Black polyurethane grip,  
 stainless steel spokes



**V15 R/W/F US 22323A**  
 Ø 350 mm (13.8") Deph 94 mm (3.7")  
 Red polyurethane grip,  
 white painted aluminum spokes



**V15 R/W/F EU 23751D**  
 Ø 350 mm (13.8") Deph 94 mm (3.7")  
 Red polyurethane grip,  
 white painted aluminum spokes

**V15**

<b>Grip material</b>	Polyurethane
<b>Grip color</b>	Black, red
<b>Spokes</b>	Stainless steel or white painted aluminum
<b>Floating cap</b>	n.a.
<b>Standard 3/4" hub</b>	Included
<b>QDH hub</b>	n.a.
<b>Certifications &amp; Standards</b>	CE, NMMA; ISO 23411 & ABYC P22

# V21-V25- V20

Polyurethane, teak, mahogany or stainless steel grip, equidistant spoke steering wheels – hub included



**V21B** 42328Z - 350 mm (13.8")



**V21W** 42324R - 350 mm (13.8")



**V21TK** 42325T - 350 mm (13.8")



**V25B** 40640R - 350 mm (13.8")



**V25W** 40642V - 350 mm (13.8")



**V25G** 40641T - 350 mm (13.8")



**V25SS** 40643X - 350 mm (13.8")



**V25M** 40644Z - 350 mm (13.8")



**V20B** 42843S - 350 mm (13.8")

Polyurethane, teak, mahogany or stainless steel grip, equidistant spoke steering wheels – hub included

# BALBI-V10-V57



**Balbi 68833J** - 350 mm (13.8")



**V10B 41693U** - 350 mm (13.8")



**V10W 41694W** - 350 mm (13.8")



**V10G 41695Y** - 350 mm (13.8")



**V10SS 41699G** - 350 mm (13.8")



**V10TK 41697C** - 350 mm (13.8")



**V57B 38155O** - 350 mm (13.8")



**V57W 38157Q** - 350 mm (13.8")



**V57G 38156P** - 350 mm (13.8")

# V24-V01-V29

Polyurethane or stainless steel grip, equidistant spoke steering wheels - hub included



**V24B** 42345Z - 350 mm (13.8")



**V24W** 42347D - 350 mm (13.8")



**V24G** 42346B - 350 mm (13.8")



**V24 COMMANDO** 42370Y - 350 mm (13.8")



**V01B** 41687Z - 350 mm (13.8")



**V01W** 41688B - 350 mm (13.8")



**V01G** 41689D - 350 mm (13.8")



**V01SS** 41692S - 350 mm (13.8")



**V29B** 42846Y - 350 mm (13.8")

Polyurethane or stainless steel grip, equidistant spoke steering wheels - hub included

# V52-V31-V28



**V52B** 40631P - 320 mm (12.6")



**V52W** 40633U - 320 mm (12.6")



**V52G** 40632S - 320 mm (12.6")



**V31B** 43006F - 320 mm (12.6")



**V28B** 42502N - 280 mm (11")



**V28W** 42503R - 280 mm (11")



**KNOB 21** 42371A



# V58-V53

Polyurethane grip, equidistant spoke steering wheels - hub included



V58G 38650F - 400 mm (15.7")



V53B 40634W - 450 mm (17.7")



KNOB 21 42371A

# STAINLESS STEEL GRIP

Stainless steel equidistant spoke steering wheels - hub included



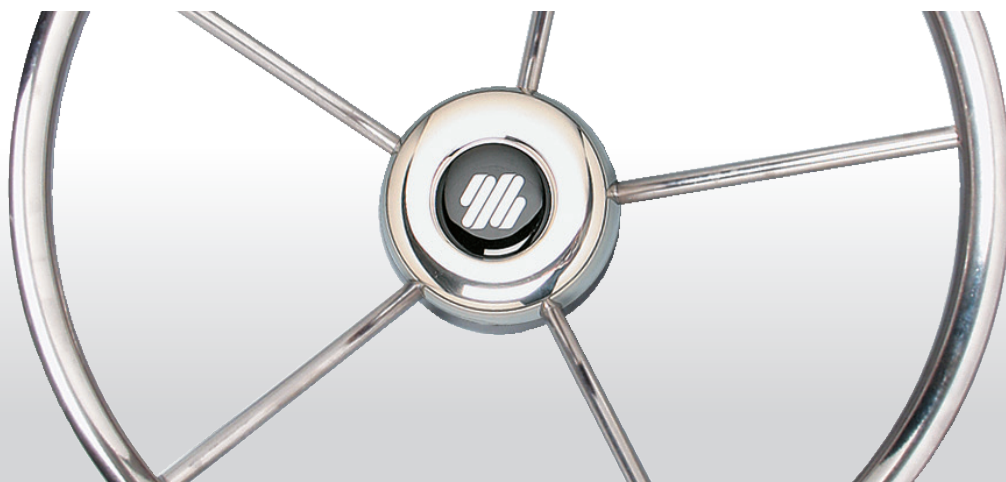
V35 31602H - 345 mm (13.6")



V23 32397D - 400 mm (15.7")



V65 39436J - 370 mm (14.6")



Wood grip, equidistant spoke steering wheels  
hub included

# WOOD GRIP



**V66** 39424B - 350 mm (13.8")



**V62** 39263D - 350 mm (13.8")



**V82** 41685V - 350 mm (13.8")



**V67** 39425D - 400 mm (15.7")



**V74/40** 41115A - 400 mm (15.7")



**V77/40** 41152G - 400 mm (15.7")



**V63** 39264F - 450 mm (17.7")



**V85** 42416W - 500 mm (19.7")



**KNOB 67** 40677R for V67, V63

# V60 ANTIGUA-V38-V45

Composite steering wheels  
hub included



**V60B** 39189U - 350 mm (13.8")



**V60W** 39190C - 350 mm (13.8")



**V60G** 39274J - 350 mm (13.8")



**V60BR** 39191E - 350 mm (13.8")



**V38B** 36517Q - 350 mm (13.8")



**V38G/W** 37387G - 350 mm (13.8")



**V45B** 37920H - 280 mm (11")



**V45W** 38049P - 280 mm (11")



**V45G** 39291J - 280 mm (11")



Composite steering wheels  
hub included

## V33-V32



V33B 35819L - 342 mm (13.4")



V33W 35817H - 342 mm (13.4")



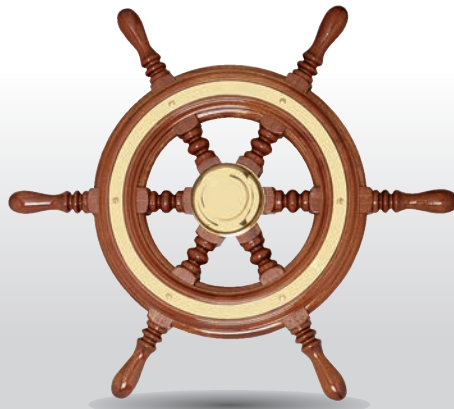
V32B 35458X - 335 mm (13.2")

hub included

## CAPTAIN'S WHEELS



V32W 35509R - 335 mm (13.2")



V90/42 39932X - 420 mm (16.5")



V89 40721R - 500 mm (19.7")



V93 40645B - 460 mm (18.1")



KNOB93 40647F for V93

# QDH HUB & ACCESSORIES

## QDH - Quick Disconnect Hub steering wheel accessories

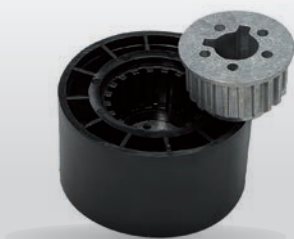
QDH – Quick Disconnect Hub allows for easy removal of the steering wheel from the cockpit  
Suitable with Ultraflex® steering wheels: please refer to the steering wheel application chart



**QDH** - 23013D - Quick connect removable hub for standard 3/4" tapered shaft

Suitable with Ultraflex® steering wheels:  
please refer to steering wheel application chart

Protection cover with Ultraflex logo  
Also available with customized logo  
(minimum quantity ordered: 20 pieces).



**X63 Standard Hub 40119D**



**Protection cover 22824Z**



**KNOB UST 21721H**



**KNOB 21 42371A**



**KNOB V56 23600F**



**KNOB SK 25458S**



**KNOB 67 40677R**



**KNOB 93 40647F**

Model	Knob suitable for the following steering wheels
<b>KNOB UST</b>	Domino, Giannutri, Imperiale PU, Levanzo, Montecristo, Ustica
<b>KNOB 21</b>	V01, V10, V20, V21, V23, V24, V25, V28, V29, V30, V31, V35, V52, V53, V57, V58, V62, V65, V66, V74/40, V77/40, V82, V85
<b>KNOB V56</b>	Adorno, Foscari PU, Morosini PU, V56
<b>KNOB SK</b>	Captiva, Contarini, Siestakey
<b>KNOB 67</b>	V63, V67
<b>KNOB 93</b>	V93

# ACCESSORIES

## Application chart

<b>X63 STANDARD HUB</b>	40119D	Asinara, Budelli, Capraia, Capri, Corsica, Domino, Levanzo, Montecristo, Mykonos, Nisida, Palmaria, Pantelleria, Pianosa, Santorini, Tavolara, Ustica, Vivara, V15
<b>KNOB UST</b>	21721H	Domino, Giannutri, Imperiale PU, Levanzo, Montecristo, Ustica
<b>KNOB 21</b>	42371A	V01, V10, V20, V21, V23, V24, V25, V28, V29, V30, V31, V35, V52, V53, V57, V58, V62, V65, V66, V74/40, V77/40, V82, V85
<b>KNOB 67</b>	40677R	V63, V67
<b>KNOB 93</b>	40647F	V93
<b>KNOB V56</b>	23600F	Adorno, Foscari PU, Morosini PU, V56
<b>KNOB SK</b>	25458S	Captiva, Contarini, Siestakey
<b>FLOATING CAP</b>		Asinara, Dolfin, Falier, Grimani, Gritti, Guarco, Loredan, Manin, Montecristo, Oderico, Razzoli, Soranzo, Spinola, Tron, Vivaldi, V15
<b>QDH-QUICK DISCONNECT HUB</b>	23013D	Adorno, Asinara, Budelli, Capraia, Capri, Corsica, Domino, Foscari, Fregoso, Giannutri, Grimani, Levanzo, Loredan, Manin, Montecristo, Morosini, Mykonos, Nisida, Palmaria, Pantelleria, Pianosa, Santorini, Tavolara, Ustica, Vivara, V15
<b>PADDLE TRIM WITH TILT</b>		Adorno, Asinara, Budelli, Capraia, Captiva, Corsica, Contarini, Dolfin, Domino, Doria, Falier, Fregoso, Foscari, Gritti, Grimani, Guarco, Imperiale, Levanzo, Loredan, Manin, Montecristo, Morosini, Nisida, Oderico, Palmaria, Pantelleria, Pianosa, Santorini, Siestakey, Tavolara, Ustica, Vivara, V01, V10, V15, V21, V24, V29, V30, V35, V56, V57, V62, V66, V70
<b>PADDLE TRIM WITH FRONT MOUNT HELM</b>		Adorno, Asinara, Balbi, Budelli, Captiva, Capraia, Contarini, Corsica, Dolfin, Domino, Doria, Falier, Foscari, Fregoso, Grimani, Gritti, Guarco, Pantelleria, Imperiale, Keywest, Levanzo, Loredan, Manin, Montecristo, Morosini, Nisida, Oderico, Palmaria, Pianosa, Santorini, Siestakey, Soranzo, Tavolara, Ustica, Vivara, Vivaldi, V01, V10, V15, V20, V21, V24, V25, V29, V30, V35, V56, V57, V62, V66, V70, V82, V99
<b>PROTECTION COVER</b>	22824Z	Adorno, Asinara, Balbi, Boccanegra, Budelli, Capraia, Captiva, Corsica, Contarini, Dolfin, Domino, Doria, Falier, Foscari, Fregoso, Gritti, Grimani, Guarco, Imperiale, Loredan, Montecristo, Morosini, Nisida, Oderico, Pianosa, Santorini, Soranzo, Spinola, Tavolara, Tron, Vivaldi, Vivara, V01, V10, V15, V20, V21, V24, V25, V29, V30, V38, V56, V57, V60, V62, V66, V70, V82, V99

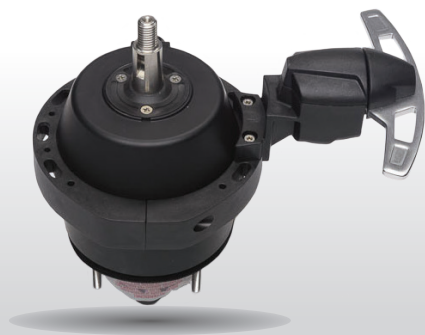
# PADDLE TRIM

For complete control of engine trim and tilt, trim tabs, jackplates, PowerPole(R) and other on board systems, the innovative Paddle Trim system is the answer.

Adaptable to existing front mount hydraulic and tilt helms (UP18 and UP20F excluded), the Paddle Trim is ergonomically designed to allow the driver to make precise adjustments to the attitude of the boat or other systems without removing his hand from the steering wheel.

**PTS-1** 43051L Single paddle kit including one paddle and the brackets to attach to a tilt or to a front mount helm

**PTS-2** 43052N Two paddles and the brackets to attach it to a tilt or to a front mount helm



PTS-1



PTS-2

## Features

- Available both in single and dual versions (for either two equal or two different outputs).
- Both single or dual paddle can be positioned at various angles for the most comfortable choice.
- Equipped with one water proof "MOM.ON-OFF-MOM.ON" switch (2 switches on dual version).
- Max load 2 Amp @ 12VDC.
- Suitable for any kind of steering wheel dish. Max wheel dia. 400 mm (15.7").
- Easy to install on the following Ultraflex® steering systems:
  - front and tilt mount hydraulic helms
  - tilt mount mechanical helms
- Wiring harness, labels and mounting hardware kit are included. The mounting plate, which differs between front and tilt mount installation, is to be ordered separately.



Single or dual



Adjustable positioning

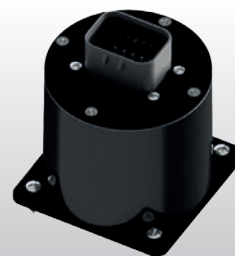


Tilt or front mount

## KIT KRT









Kit relay available KTR - 42860S

- It allows a Paddle Trim pair to control electrical loads up to 10 Amp (e.g. Trim Tabs Uflex®).
- Easy to use and to install, through connectors with pre-crimped contacts.



KRT KIT

# PADDLE TRIM

	ENGINE TRIM & TILT	JACKPLATE	TRIM TABS	HORN
UP				
DOWN				

## PADDLE TRIM LABELS

DESCRIPTION	P. No	SINGLE QTY	DUAL QTY
- Single function control device	42857D	1	2
- Mounting plate for tilt mount helms (mech or hydraulic)	42858F	1	1
or:			
- Mounting plate for front mount hydraulic helms	42859H	1	1
- <b>KTR</b> kit relay for loads exceeding 5 Amp	42860S	1	2

## ORDER GUIDE

 **ULTRAFLEX S.p.a.**

Via Milite Ignoto 8A  
16012 Busalla (GE) - Italy  
Ph +39 010 96201  
uf.marine.sales@ultraflexgroup.it  
[www.ultraflex.it](http://www.ultraflex.it)

 **ULTRAFLEX GROUP**

